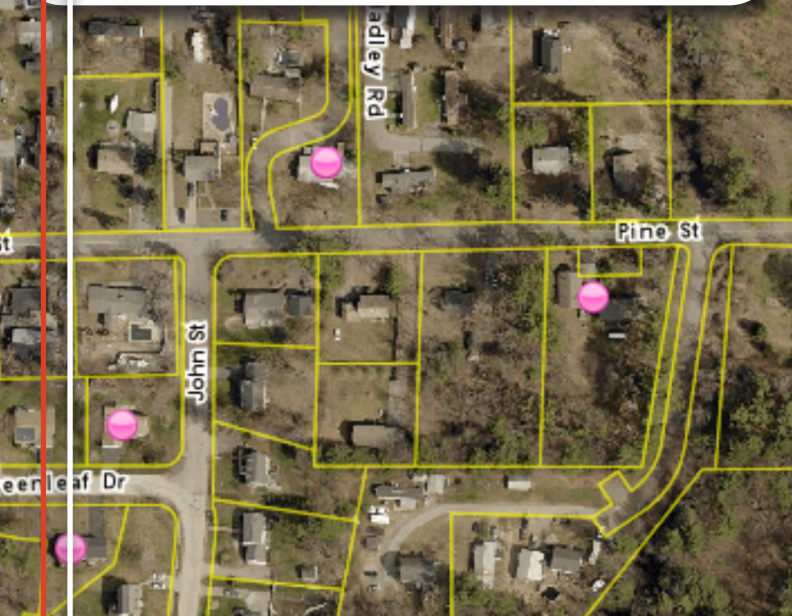
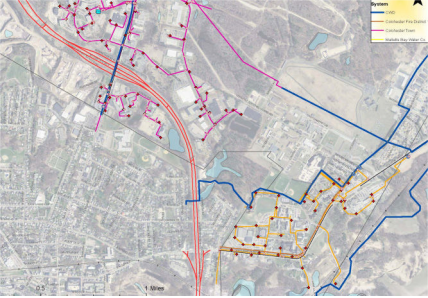


Asset Management

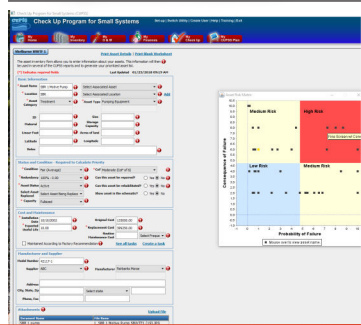


MANAGING MUNICIPAL ASSETS

Municipal assets include buildings, facilities, roads, bridges, utilities, and open spaces. We quantify these assets, assess their condition, identify risks and vulnerabilities, predict remaining service life, and develop capital improvement plans for asset sustainability and climate resiliency to provide a high level of service to the public.



9 step approach to implementation



Engineering Services:

General: Inventory, condition assessment, vulnerability, life-cycle costs, level of service, criticality, O&M, CIP, funding strategies

Asset Inventory: Organize available plans, review current GIS, field locate/verify GPS data, add GPS data to asset database

Level of Service: Team workshop with public involvement, identify desired level of service, rank assets, identify/mitigate vulnerabilities

Implementation: Structured asset database, CIP with prioritized improvements, optimized O&M, improved climate resiliency

How we help:

Our team of professionals guides communities through the maze of competing needs to clearly identify critical and vulnerable infrastructure and prioritize improvements to maintain a high level of service.

